

PARTS LIST

FDG33-PL

DEMOLITION AND SORTING GRAB



SUPPLY PERIOD OF SPARE PARTS

Thank you for purchasing a Furukawa Rock Drill product.

Please note that the supply of spare parts will be assured for 10 years after the termination of production. Although the supply of spare parts is terminated in principle at the maturity of the subject supply period, we may be able to supply them upon request even after the expiration of the supply period on condition that the delivery date and price are subject to negotiation.

Even if it is within the supply period, however, the delivery date, price, etc. may be subject to negotiation when it is difficult to keep stocks should the purchased parts, such as electronic parts, etc., be not available because the manufacturer does not produce them anymore.

If you have any questions about any particular model subject to the warranty as stated above and the time limit of spare parts supply, please contact your nearest FRD Europe B.V. distributor.

USING THE PARTS LIST

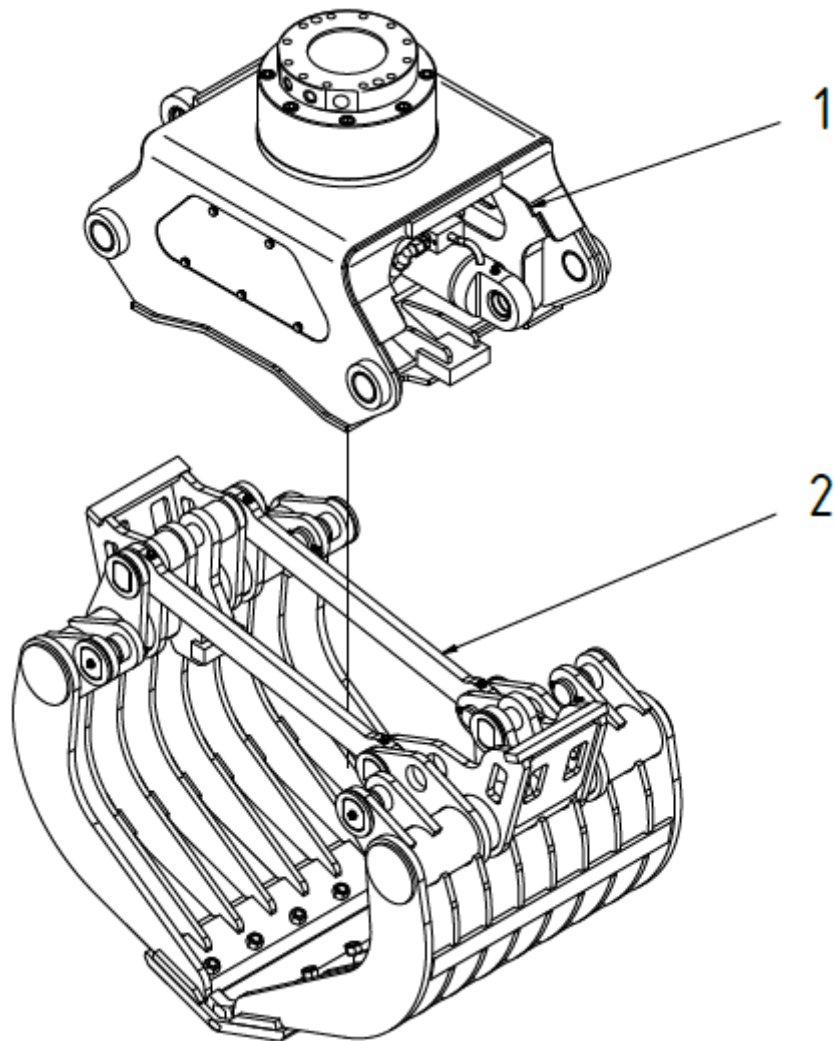
1. This parts list describes the components of a demolition and sorting grab.
2. When ordering a part, refer to the illustrations and lists in this parts list and then inform the FRD Europe B.V. distributor in your area of the following items.
 - (1) Model name
 - (2) Serial No.
 - (3) Part No.
 - (4) Part name
 - (5) Quantity
3. Use "Genuine Furukawa Rock Drill Parts" when replacing all parts.
4. The illustrations in this parts list show the positions and shapes of the parts so that a user can order a part without any problem.

Do not repair a demolition and sorting grab by using this parts list.
5. The parts in this list are subject to change for improvement without notice on the part of the manufacturer.

LIST OF CONTENT

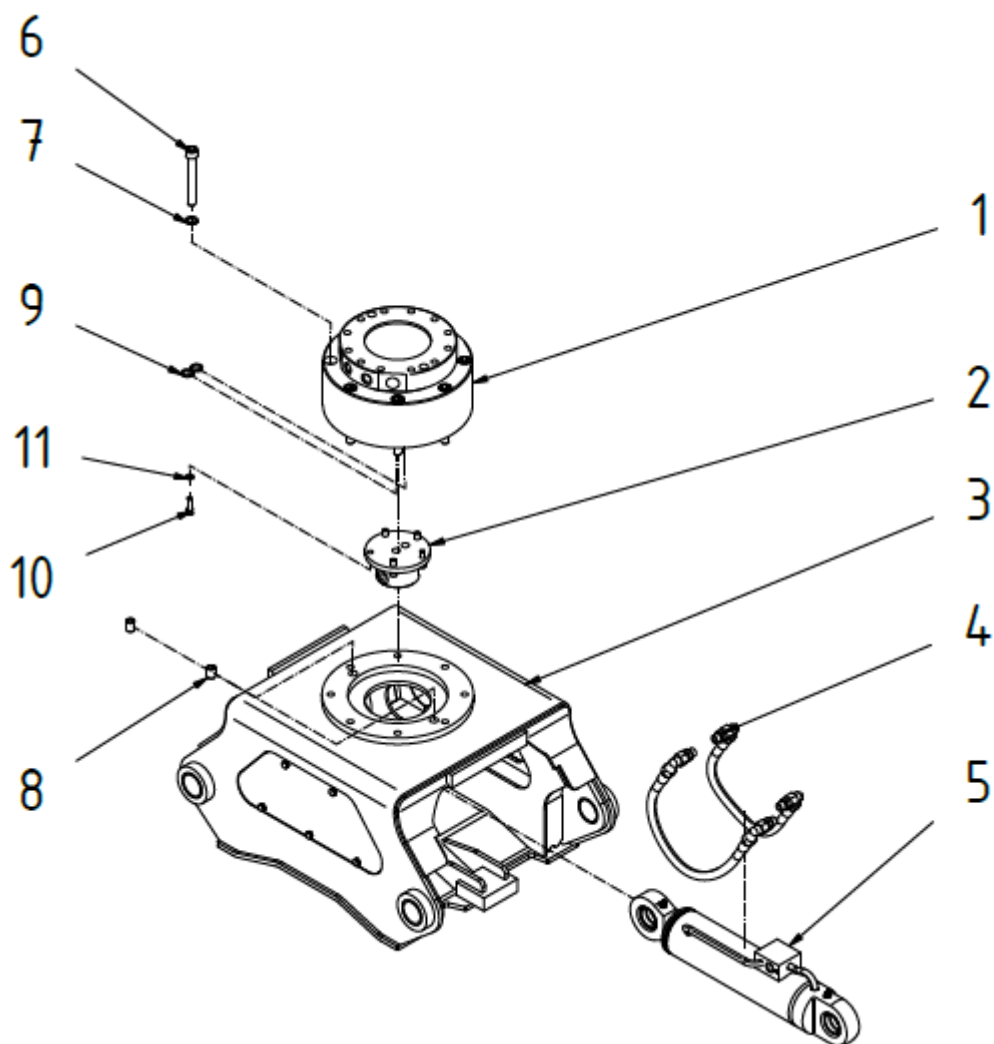
SHELL AND BASIC UNIT ASSEMBLY	1
BASIC UNIT ASSEMBLY	2
FRAME ASSEMBLY.....	3
HOSE SET ASSEMBLY	4
HYDRAULIC CYLINDER ASSEMBLY	5
SHELL SET ASSEMBLY	7
SYNCHRONIZATION LINK ASSEMBLY	8
SHELL LEFT ASSEMBLY	9
SHELL RIGHT ASSEMBLY	10

SHELL AND BASIC UNIT ASSEMBLY



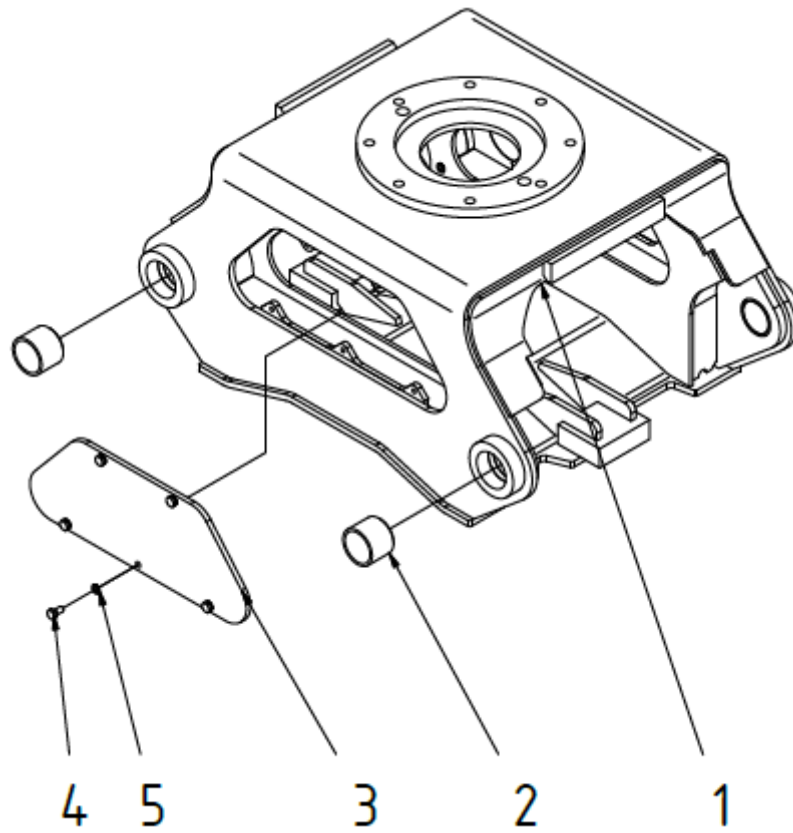
ITEM	PART NO.	PART NAME	Q'TY	REMARKS
1	2000029303	BASIC UNIT	1	
2	2006029302	SHELL SET	1	

BASIC UNIT ASSEMBLY



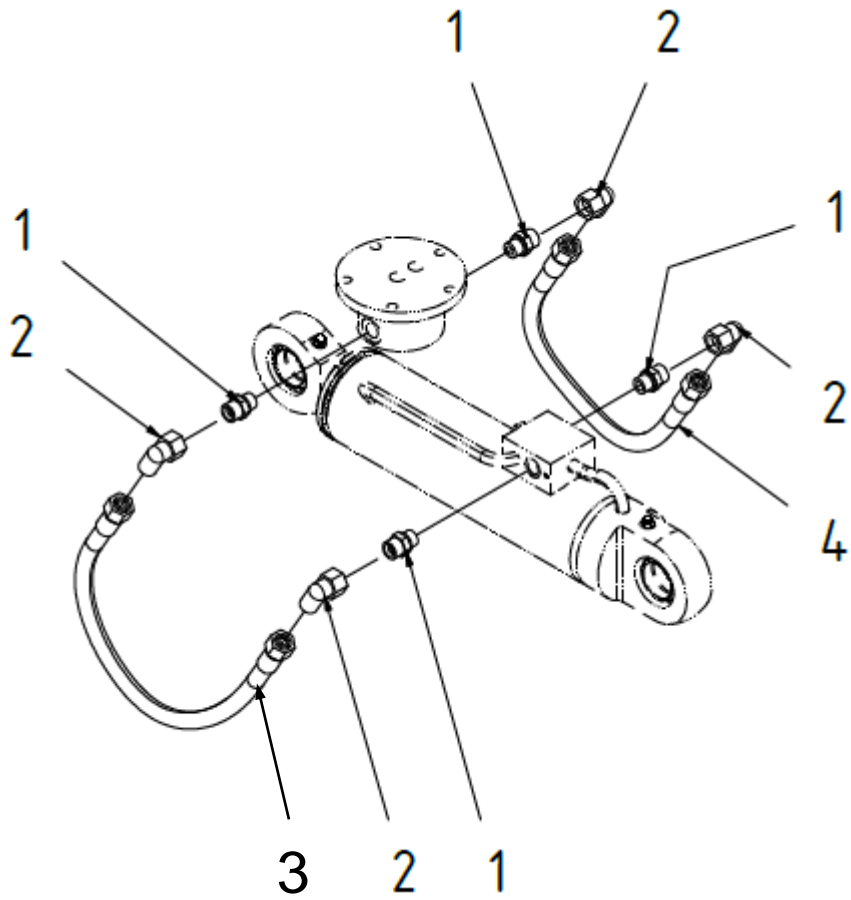
ITEM	PART NO.	PART NAME	Q'TY	REMARKS
1	3007000042	ROTATOR ASSEMBLY	1	
2	3014000020	OIL DISTRIBUTOR	1	
3	2002035040	FRAME	1	
4	2010029112	HOSE SET	1	
5	2011035620	HYDRAULIC CYLINDER	1	
6	5001001306	SCREW	8	
7	5001002063	WASHER	8	
8	5001005008	CLAMPING SLEEVE	2	
9	5002004003	SEALING RING	2	
10	5001001101	SCREW	5	
11	5001002060	WASHER	5	

FRAME ASSEMBLY



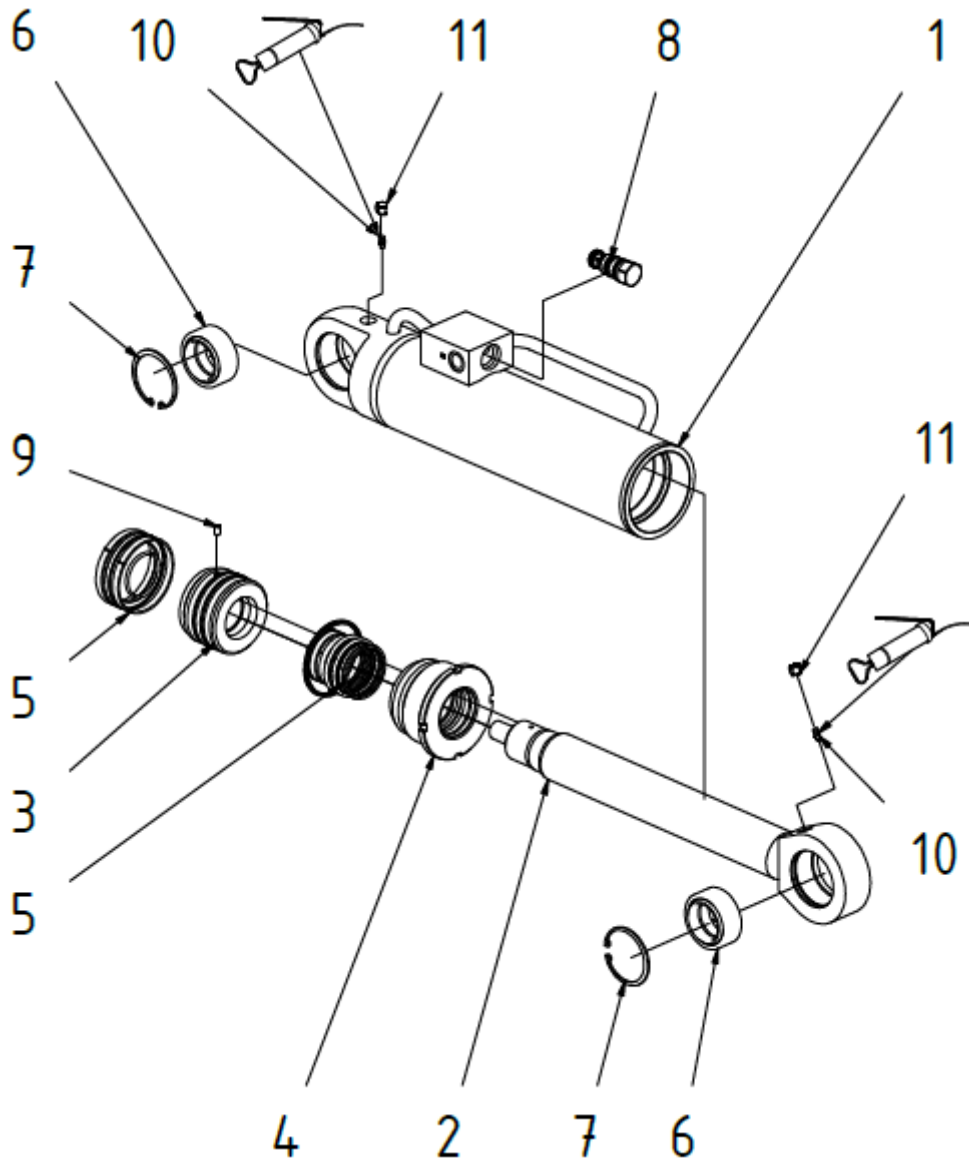
ITEM	PART NO.	PART NAME	Q'TY	REMARKS
1	2002035039	FRAME (STEELWORK)	1	
2	5003002587	BUSH	4	
3	3012000131	ACCESS PANEL	2	
4	5001001002	SCREW	10	
5	5001002084	WASHER	10	

HOSE SET ASSEMBLY



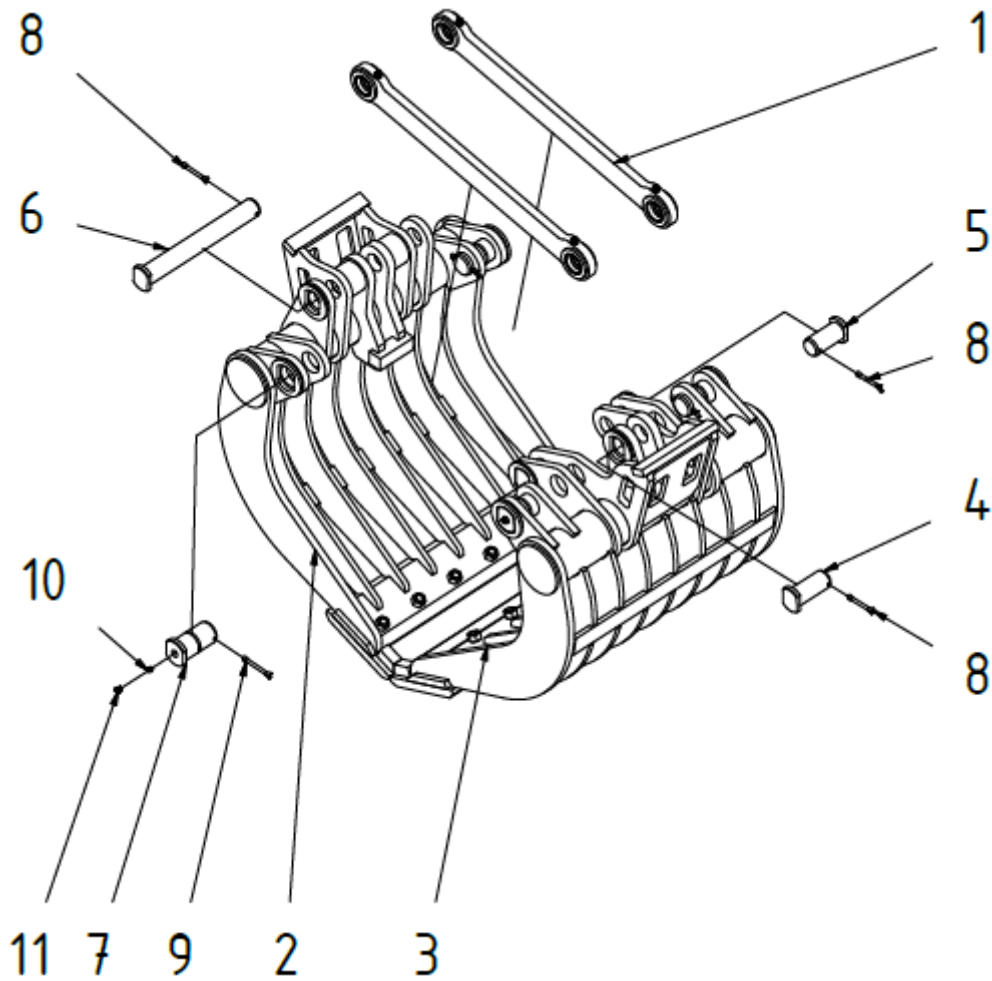
ITEM	PART NO.	PART NAME	Q'TY	REMARKS
1	5002001016	ADAPTER	4	
2	5002001042	ADAPTER	4	
3	5002010363	HYDRAULIC HOSE	1	
4	5002010391	HYDRAULIC HOSE	1	

HYDRAULIC CYLINDER ASSEMBLY



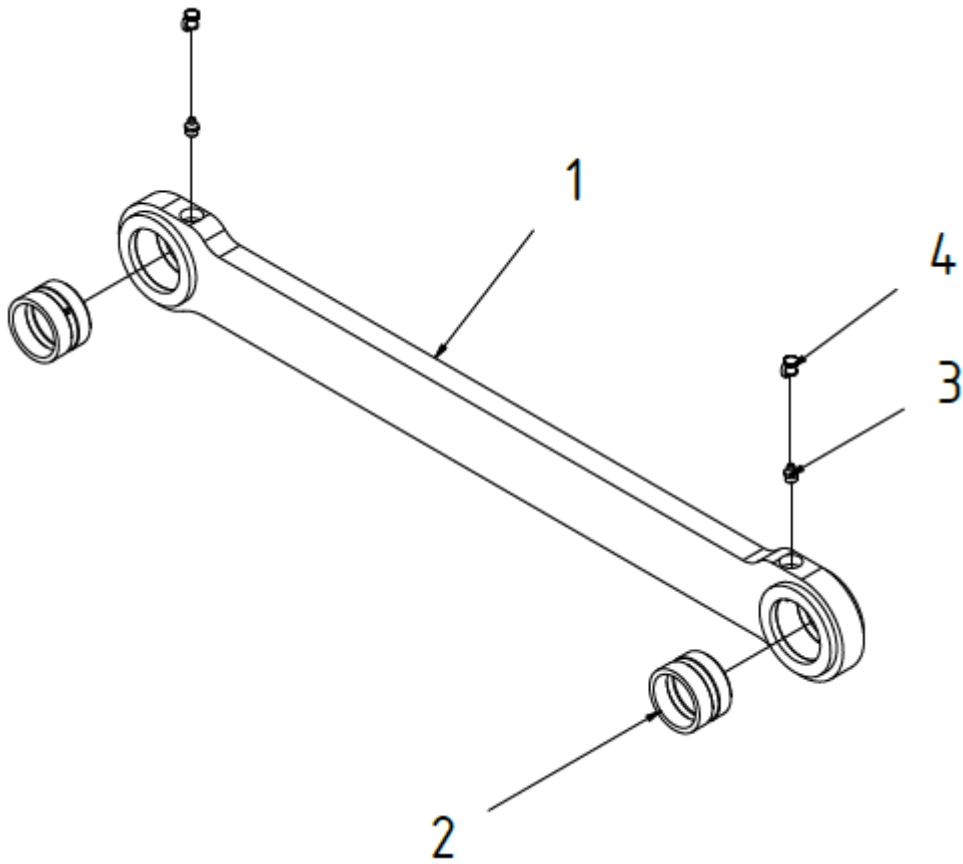
ITEM	PART NO.	PART NAME	Q'TY	REMARKS
1	2011035621	HYDRAULIC CYLINDER	1	
2	2011035624	PISTON ROD	1	
3	2011035623	PISTON	1	
4	2011035624	GUIDE NUT	1	
5	2011035625	SEAL KIT - CYLINDER	1	
6	5003003001	PIVOTING BEARING	2	
7	5003004001	CIRCLIP	2	
8	5002008036	(PRESSURE RELIEF) VALVE	1	
9	5001007001	SET SCREW	1	
10	5003001001	GREASE NIPPLE	2	
11	5003001003	CAP FOR GREASE NIPPLE	2	

SHELL SET ASSEMBLY



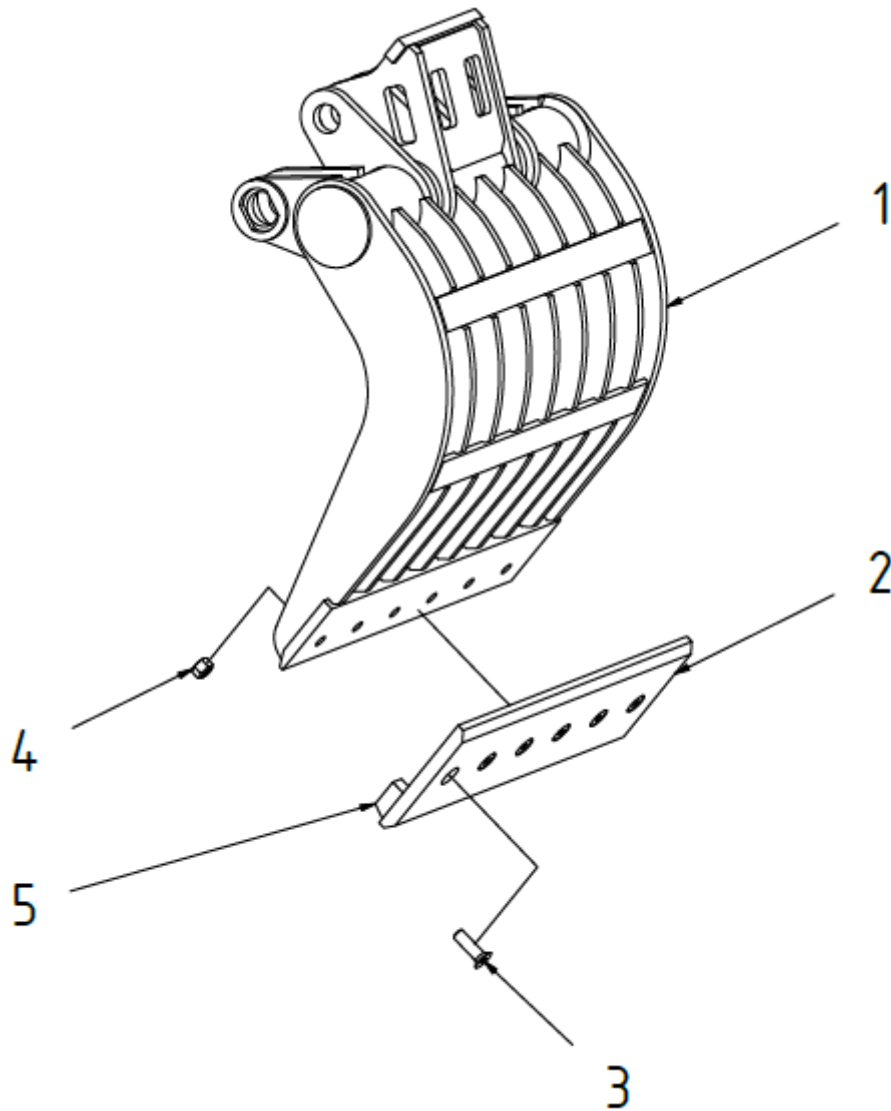
ITEM	PART NO.	PART NAME	Q'TY	REMARKS
1	2004029005	SYNCHRONIZATION LINK	2	
2	2005029325	SHELL LEFT (COMPLETE)	1	
3	2005029326	SHELL RIGHT (COMPLETE)	1	
4	3009050013	PIN	1	
5	3009050014	PIN	2	
6	3009050078	PIN	1	
7	3009060012	PIN	4	
8	5001004004	SPLINT PIN	4	
9	5001004008	SPLINT PIN	4	
10	5003001001	GREASE NIPPLE	4	
11	5003001003	CAP FOR GREASE NIPPLE	4	

SYNCHRONIZATION LINK ASSEMBLY



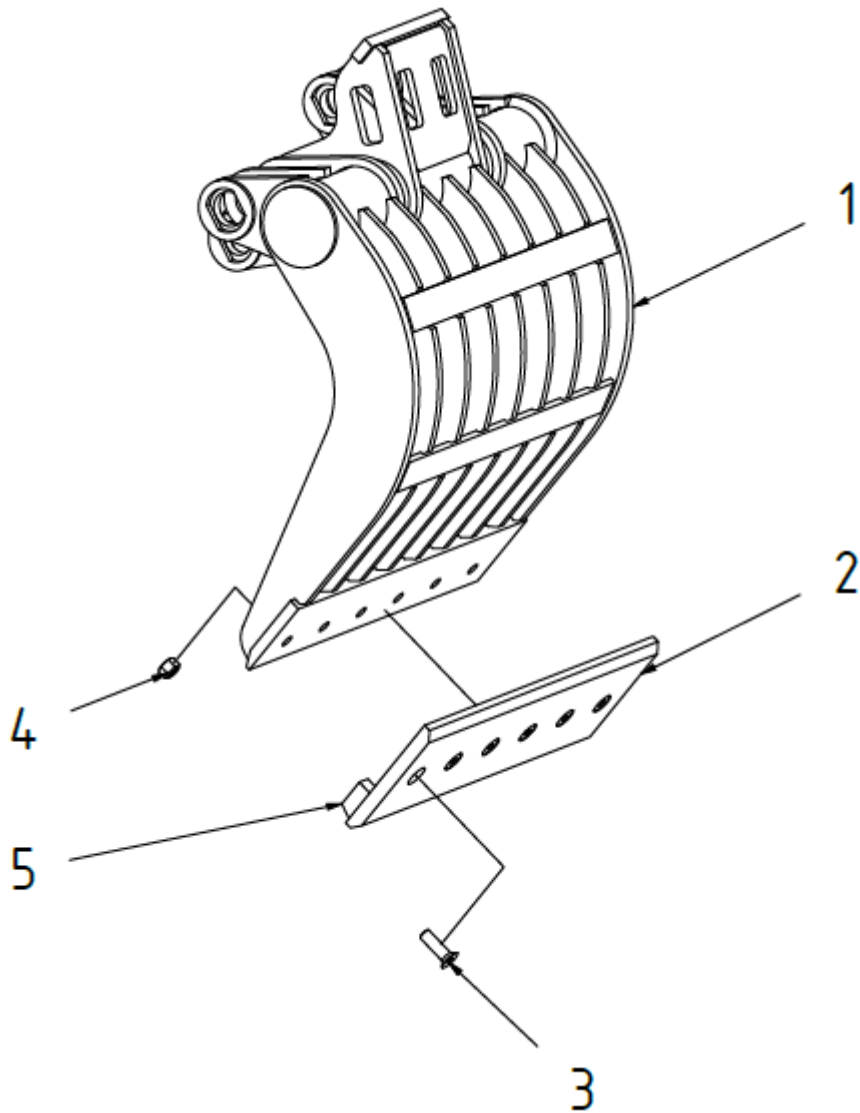
ITEM	PART NO.	PART NAME	Q'TY	REMARKS
1	2004029002	SYNCH. LINK (STEELWORK)	1	
2	5003002305	BUSH	2	
3	5003001001	GREASE NIPPLE	2	
4	5003001003	CAP FOR GREASE NIPPLE	2	

SHELL LEFT ASSEMBLY



ITEM	PART NO.	PART NAME	Q'TY	REMARKS
1	2005029303	SHELL LEFT (STEELWORK)	1	
2	5004001462	CUTTING EDGE SET	1	1 SET = 2 PCS
3	5001001342	SCREW	6	
4	5001006003	NUT	6	
5	5004001720	STOP BLOCK	2	

SHELL RIGHT ASSEMBLY



ITEM	PART NO.	PART NAME	Q'TY	REMARKS
1	2005029304	SHELL RIGHT (STEELWORK)	1	
2	5004001462	CUTTING EDGE SET	1	1 SET= 2 PCS
3	5001001342	SCREW	6	
4	5001006003	NUT	6	
5	5004001720	STOP BLOCK	2	



FURUKAWA ROCK DRILL EUROPE B.V.

Proostwetering 29

3543 AB Utrecht, The Netherlands

Tel.: +31-(0)30-2412277 E-mail: frd@frd.eu

Book No. : FDG33-K101E

Date of Issue : March 2021