

PARTS LIST

FDG15-PL

DEMOLITION AND SORTING GRAB

from serial number 270592 and up



SUPPLY PERIOD OF SPARE PARTS

Thank you for purchasing a Furukawa Rock Drill product.

Please note that the supply of spare parts will be assured for 10 years after the termination of production. Although the supply of spare parts is terminated in principle at the maturity of the subject supply period, we may be able to supply them upon request even after the expiration of the supply period on condition that the delivery date and price are subject to negotiation.

Even if it is within the supply period, however, the delivery date, price, etc. may be subject to negotiation when it is difficult to keep stocks should the purchased parts, such as electronic parts, etc., be not available because the manufacturer does not produce them anymore.

If you have any questions about any particular model subject to the warranty as stated above and the time limit of spare parts supply, please contact your nearest FRD Europe B.V. distributor.

USING THE PARTS LIST

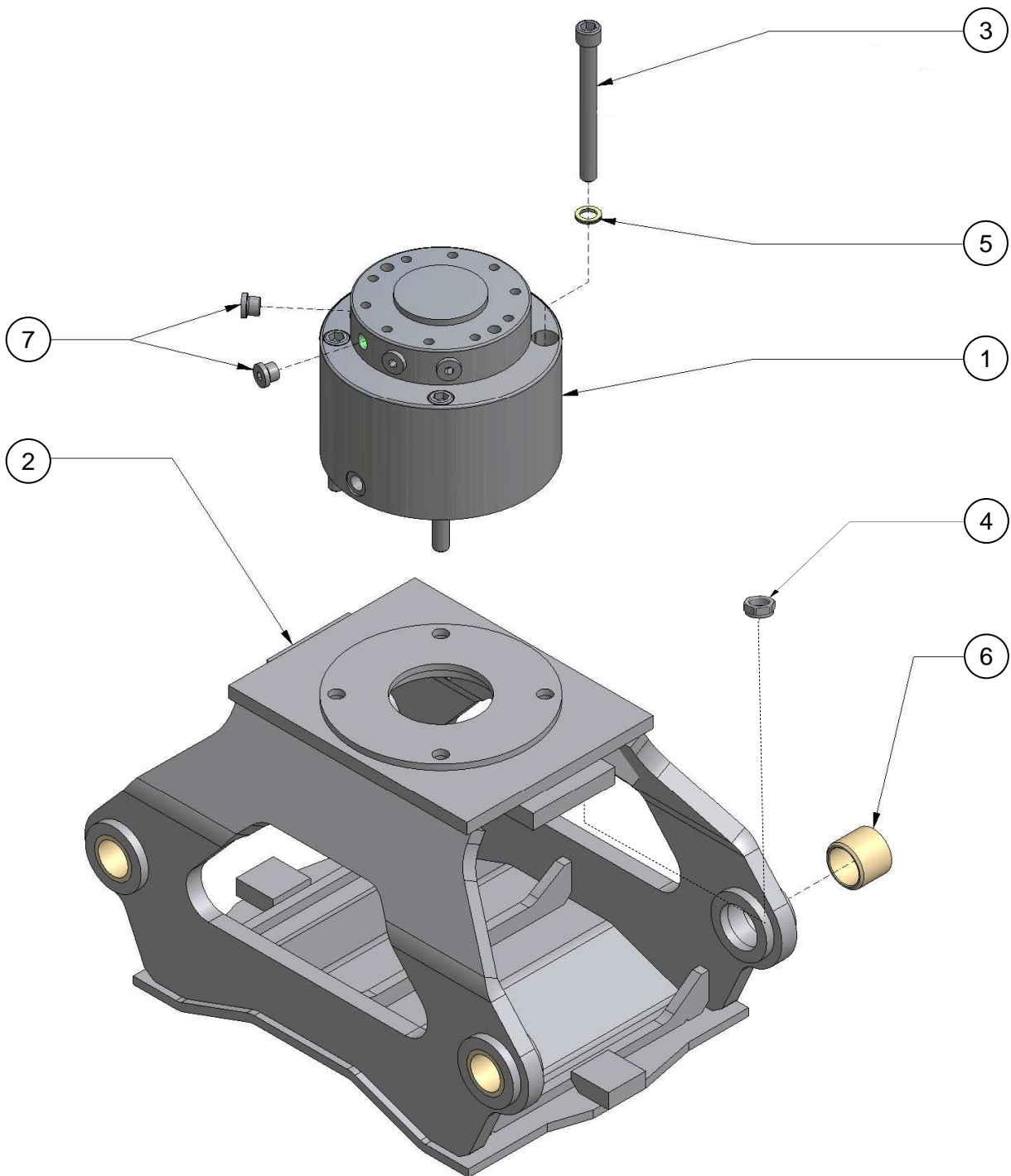
1. This parts list describes the components of a demolition and sorting grab.
2. When ordering a part, refer to the illustrations and lists in this parts list and then inform the FRD Europe B.V. distributor in your area of the following items.
 - (1) Model name
 - (2) Serial No.
 - (3) Part No.
 - (4) Part name
 - (5) Quantity
3. Use "Genuine Furukawa Rock Drill Parts" when replacing all parts.
4. The illustrations in this parts list show the positions and shapes of the parts so that a user can order a part without any problem.

Do not repair a demolition and sorting grab by using this parts list.
5. The parts in this list are subject to change for improvement without notice on the part of the manufacturer.

CONTENTS

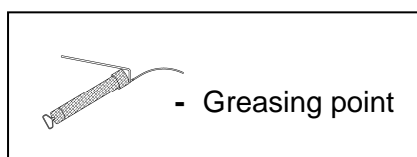
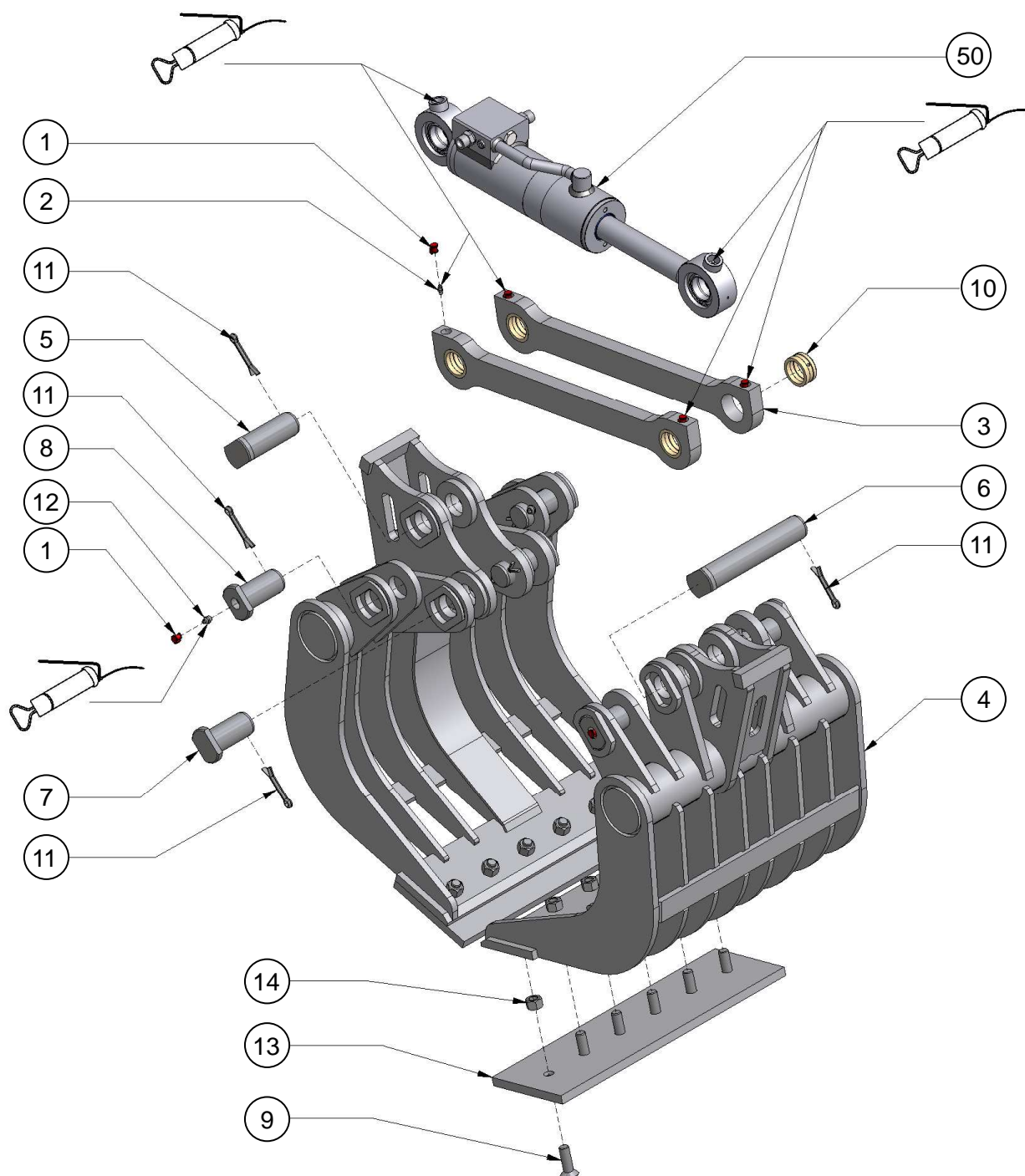
| GROUP NAME | PAGE |
|------------------------------------|-------|
| FRAME AND ROTATOR ASSEMBLY | 01-01 |
| SHELLS AND CYLINDER ASSEMBLY | 02-01 |
| HYDRAULIC HOSES AND FITTINGS | 03-01 |
| HYDRAULIC CYLINDER ASSEMBLY | 04-01 |

FRAME AND ROTATOR ASSEMBLY



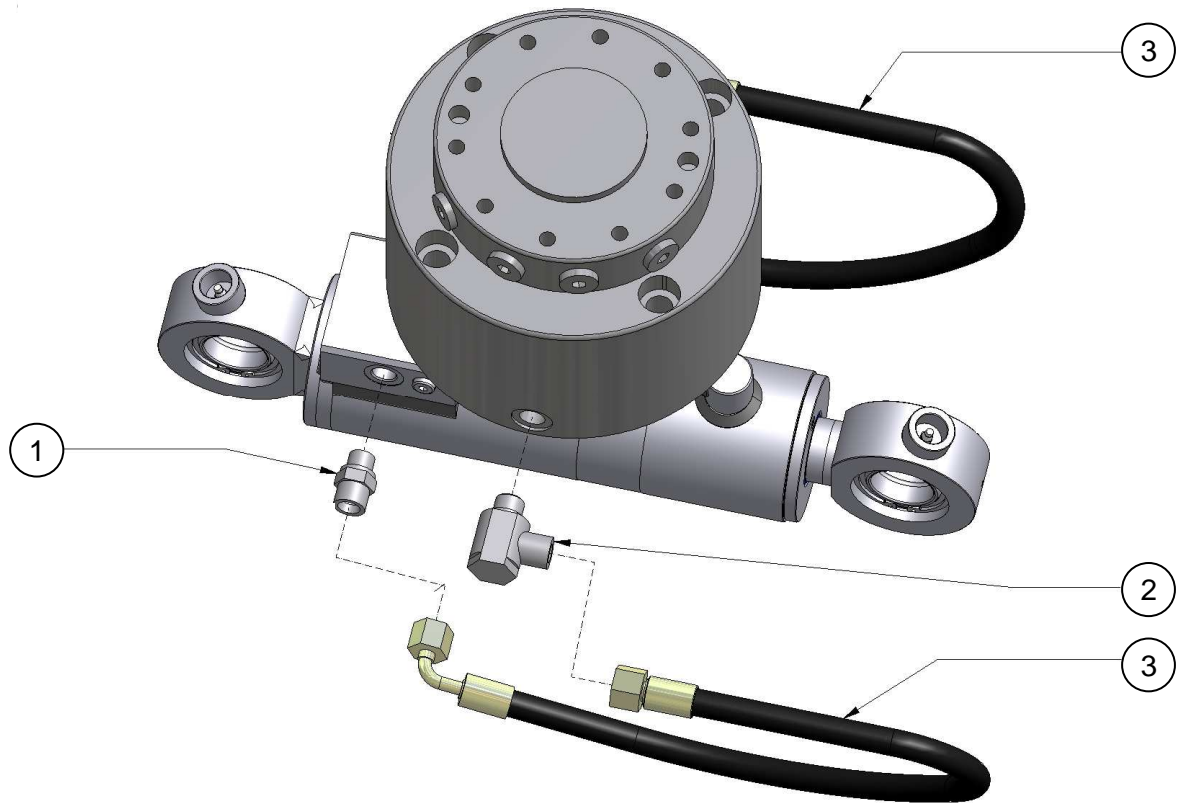
| ITEM | PART NO. | PART NAME | Q'TY | REMARKS |
|------|------------|---------------------------|------|---------------|
| 1 | 3007000034 | ROTATOR ASSEMBLY | 1 | TORQUE 279 Nm |
| 2 | 2002027101 | FRAME | 1 | |
| 3 | 5001001234 | SCREW - ROTATOR/FRAME | 4 | |
| 4 | 5001006002 | NUT | 4 | |
| 5 | 5001002083 | WASHER | 4 | |
| 6 | 5003002113 | BUSHING - SHELL PIVOT PIN | 4 | |
| 7 | 5002001217 | PLUG | 4 | |

SHELLS AND CYLINDER ASSEMBLY



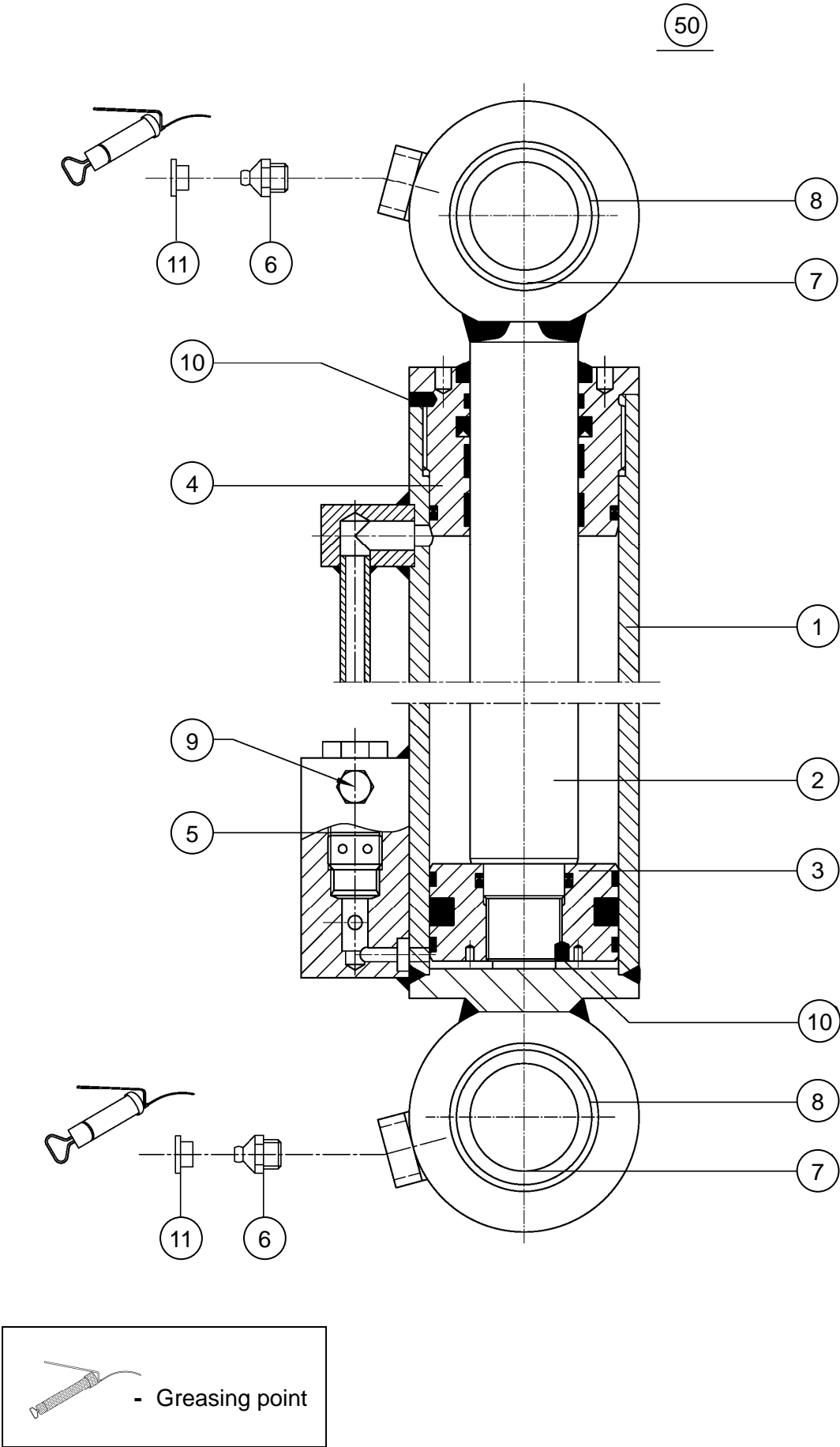
SHELLS AND CYLINDER ASSEMBLY

| ITEM | PART NO. | PART NAME | Q'TY | REMARKS |
|------|------------|--------------------------------|------|----------------|
| 1 | 5003001003 | GREASE NIPPLE DUST CAP | 8 | |
| 2 | 5003001002 | GREASE NIPPLE | 4 | |
| 3 | 2004033010 | SYNCHRONIZATION LINK | 2 | |
| 4 | 2006027701 | SHELL SET | 1 | |
| 5 | 3009040042 | CYLINDER PIN | 1 | |
| 6 | 3009040043 | CYLINDER/LINK PIN | 1 | |
| 7 | 3009040040 | SYNCHRONIZATION LINK PIN | 2 | |
| 8 | 3009040041 | SHELL PIVOT PIN | 4 | |
| 9 | 5001001216 | SCREW | 12 | |
| 10 | 5003002110 | BUSHING - SYNCHRONIZATION LINK | 4 | |
| 11 | 5001004010 | SPLIT PIN | 8 | |
| 12 | 5003001001 | GREASE NIPPLE | 4 | |
| 13 | 5004001385 | CUTTING EDGE SET | 1 | |
| 14 | 5001006006 | NUT | 12 | |
| 50 | 2011033500 | HYDRAULIC CYLINDER ASSEMBLY | 1 | SEE PAGE 04-01 |



| ITEM | PART NO. | PART NAME | Q'TY | REMARKS |
|------|------------|------------------|------|---------------|
| 1 | 5002001013 | CONNECTOR | 2 | TORQUE 80 Nm |
| 2 | 5002001055 | SWIVEL CONNECTOR | 2 | TORQUE 100 Nm |
| 3 | 5002010185 | HOSE ASSEMBLY | 2 | |

HYDRAULIC CYLINDER ASSEMBLY



HYDRAULIC CYLINDER ASSEMBLY

| ITEM | PART NO. | PART NAME | Q'TY | REMARKS |
|------|------------|-----------------------------|------|--------------|
| | 2011033500 | HYDRAULIC CYLINDER ASSEMBLY | 1 | |
| 1 | 2011033501 | CYLINDER TUBE | 1 | |
| 2 | 2011033502 | PISTON ROD | 1 | |
| 3 | 2011033503 | PISTON | 1 | |
| 4 | 2011033504 | CYLINDER HEAD | 1 | USE LOCTITE |
| 5 | 5002008044 | NON-RETURN VALVE | 1 | TORQUE 45 Nm |
| 6 | 5003001002 | GREASE NIPPLE | 2 | |
| 7 | 5003003008 | BEARING | 2 | |
| 8 | 5003004006 | CIRCLIP | 4 | |
| 9 | 5002001254 | PLUG | 1 | |
| 10 | 5001007013 | SET SCREW | 2 | USE LOCTITE |
| 11 | 5003001003 | GREASE NIPPLE DUST CAP | 2 | |
| ** | 2011033505 | CYLINDER SEAL KIT | ** | |



FURUKAWA ROCK DRILL EUROPE B.V.

Proostwetering 29

3543 AB Utrecht, The Netherlands

Tel.: +31-(0)30-2475160 Fax: +31-(0)30-2412305

Book No. : FDG15-K201E

Date of Issue : August 2016