

PARTS LIST

FDG10-PL

DEMOLITION AND SORTING GRAB



SUPPLY PERIOD OF SPARE PARTS

Thank you for purchasing a Furukawa Rock Drill product.

Please note that the supply of spare parts will be assured for 10 years after the termination of production. Although the supply of spare parts is terminated in principle at the maturity of the subject supply period, we may be able to supply them upon request even after the expiration of the supply period on condition that the delivery date and price are subject to negotiation.

Even if it is within the supply period, however, the delivery date, price, etc. may be subject to negotiation when it is difficult to keep stocks should the purchased parts, such as electronic parts, etc., be not available because the manufacturer does not produce them anymore.

If you have any questions about any particular model subject to the warranty as stated above and the time limit of spare parts supply, please contact your nearest FRD Europe B.V. distributor.

USING THE PARTS LIST

1. This parts list describes the components of a demolition and sorting grab.
2. When ordering a part, refer to the illustrations and lists in this parts list and then inform the FRD Europe B.V. distributor in your area of the following items.
 - (1) Model name
 - (2) Serial No.
 - (3) Part No.
 - (4) Part name
 - (5) Quantity
3. Use "Genuine Furukawa Rock Drill Parts" when replacing all parts.
4. The illustrations in this parts list show the positions and shapes of the parts so that a user can order a part without any problem.

Do not repair a demolition and sorting grab by using this parts list.
5. The parts in this list are subject to change for improvement without notice on the part of the manufacturer.

How to use the parts list

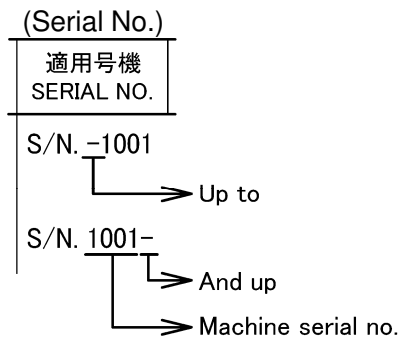
(1) Illustration

- ① Group Name..... It is the same as the Group Name on the CONTENTS.
- ② Fig. No..... It shows the illustration number and corresponds to Fig. No. of the parts breakdown.
- ③ Item It corresponds to Item on the parts breakdown.
- ④ Group Name..... It shows the group name in which the parts breakdown is covered on a separate page in this parts list.
- ⑤ Page..... The left side of “–” (hyphen) shows consecutive numbers in each unit. The right side shows consecutive numbers of drawings/lists in each unit.

(2) Parts Breakdown

- ① Item It is shown by two figures and corresponds to the Item in the illustration. Item nos. are not always in sequence.
When a part has been changed in design and then the part number or quantity has been changed, a sub-number is added to Item in order to show the order of change.
- ② Part No. (a) Part number is shown.
(b) Indication of a no-service part
With parts which cannot be serviced as a single part, only the illustrations and part names are given and the mark ** is shown in the part number column. These parts are serviced as an assembly, a kit or a set.
- ③ Part Name It shows the description of a part. When the following marks are put before the part name.
No mark Represents a single part or an assembly component.
* Represents a part or an assembled part of the assembly component. It is listed out after the assembly name.
** Represents a part of the assembled part of the assembly component.
- ④ Q' ty As a rule, this column indicates the quantity of a part required for one crusher. In case of a part of an assembly component, however, it indicates the quantity of the part required for one assembly component. In this column, the following mark is also used besides the Arabic numerals to indicate the quantity of parts.
() Parenthesis..... This part is not included in an assembly. ••• Option etc.
AR As required.

⑤ Serial No.Serial No. in which this part is used is as shown in the following example:



⑥ RemarksThe marks and part numbers in the Remarks column are described below.

A..... Replaceable common part and following part no.

B..... Represents that this part is not supplied as a single part; however, it is supplied as a set.

C Represents that this part is not supplied as a single part.

When an assembly including this part is supplied, the parts after this mark are supplied. When no parts are given after this mark, the components of this part are supplied.

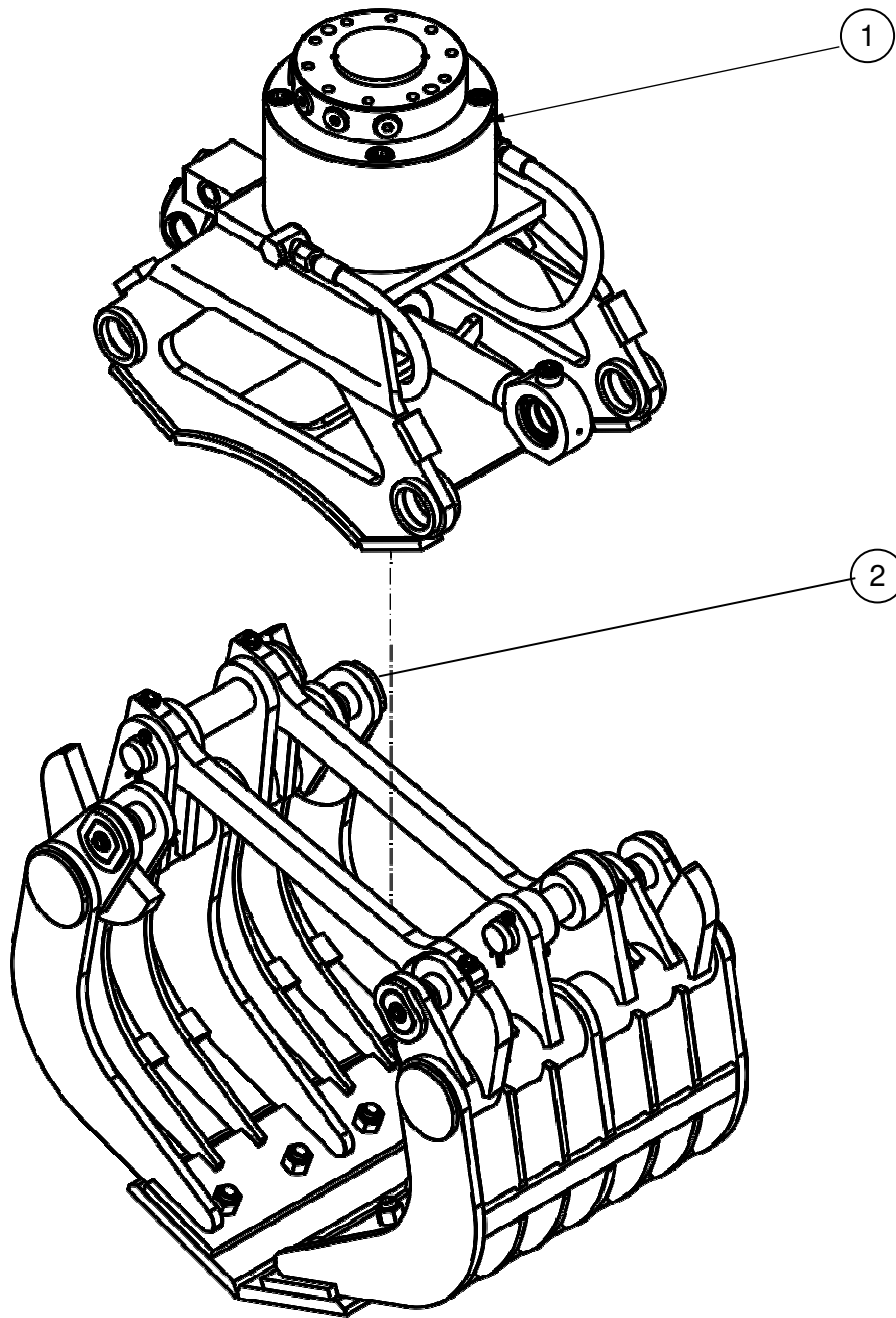
D This part is no longer manufactured due to an incorrect part number or a change and supplying this part is discontinued. When a substitute can be supplied, the part after this mark is supplied.

⑦ Page.....The left side of “-” (hyphen) shows consecutive numbers in each unit. The right side shows consecutive numbers of drawings/lists in each unit.

CONTENTS

GROUP NAME	PAGE
DEMOLITION AND SORTING GRAB ASSEMBLY.....	01-01
BASIC UNIT	02-01
FRAME AND ROTATOR ASSEMBLY	03-01
HYDRAULIC CYLINDER ASSEMBLY	04-01
HYDRAULIC HOSES AND FITTINGS	05-01
SHELL ASSEMBLY	06-01
SHELLS AND LINK	07-01

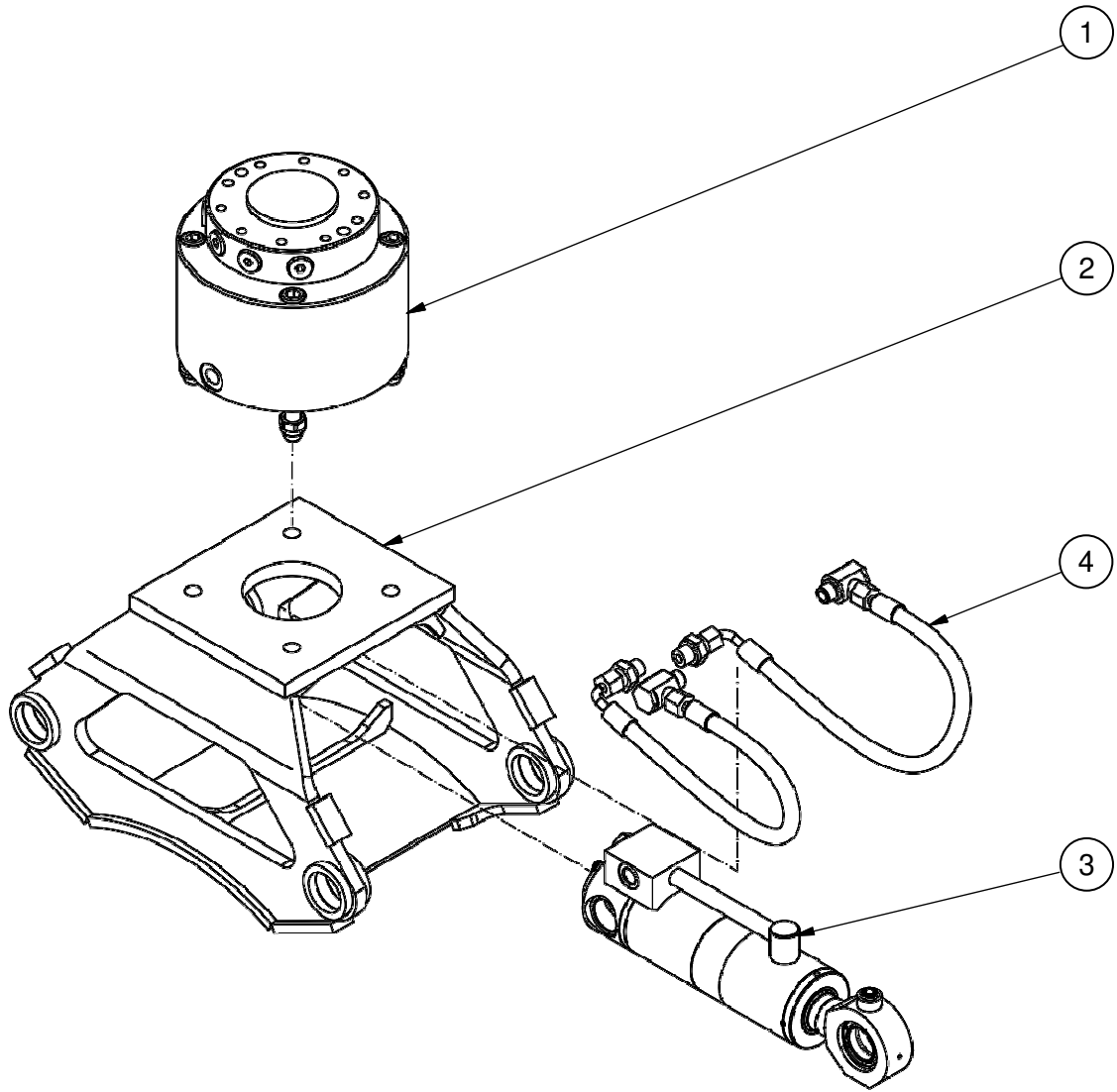
DEMOLITION AND SORTING GRAB ASSEMBLY



DEMOLITION AND SORTING GRAB ASSEMBLY

ITEM	PART NO.	PART NAME	Q'TY	REMARKS
1	2000033001	BASIC UNIT	1	SEE PAGE 02-01
2	2006027005	SHELL ASSEMBLY	1	SEE PAGE 06-01

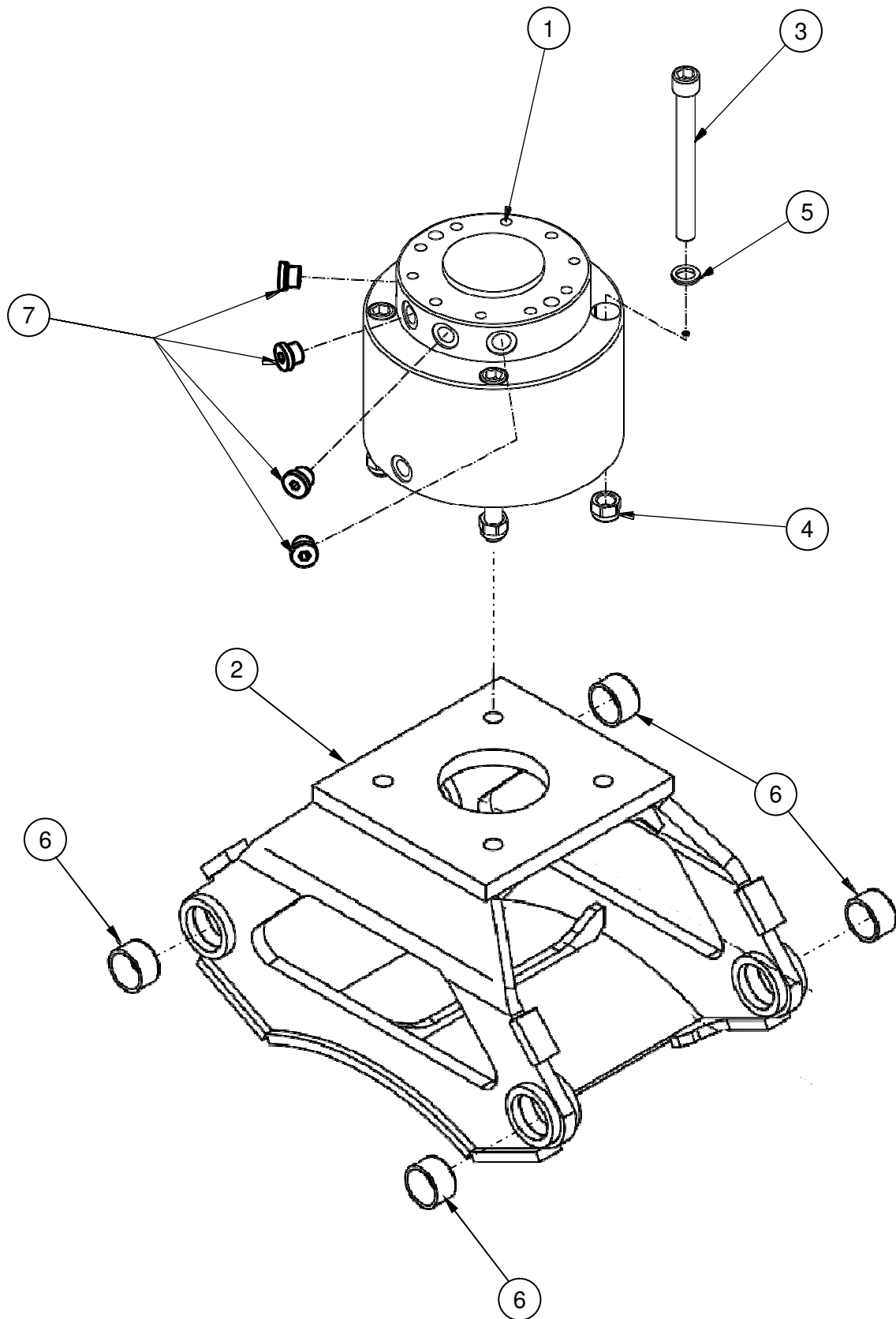
BASIC UNIT



BASIC UNIT

ITEM	PART NO.	PART NAME	Q'TY	REMARKS
1	3007000393	ROTATOR WITH MOUNTING BOLTS	1	SEE PAGE 03-01
2	2002033001	FRAME	1	SEE PAGE 03-01
3	2011033100	HYDRAULIC CYLINDER ASSEMBLY	1	SEE PAGE 04-01
4	2010033001	HYDRAULIC HOSES AND FITTINGS	1	SEE PAGE 05-01

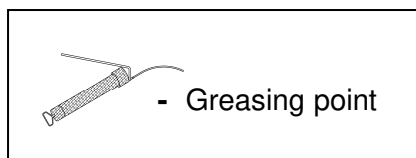
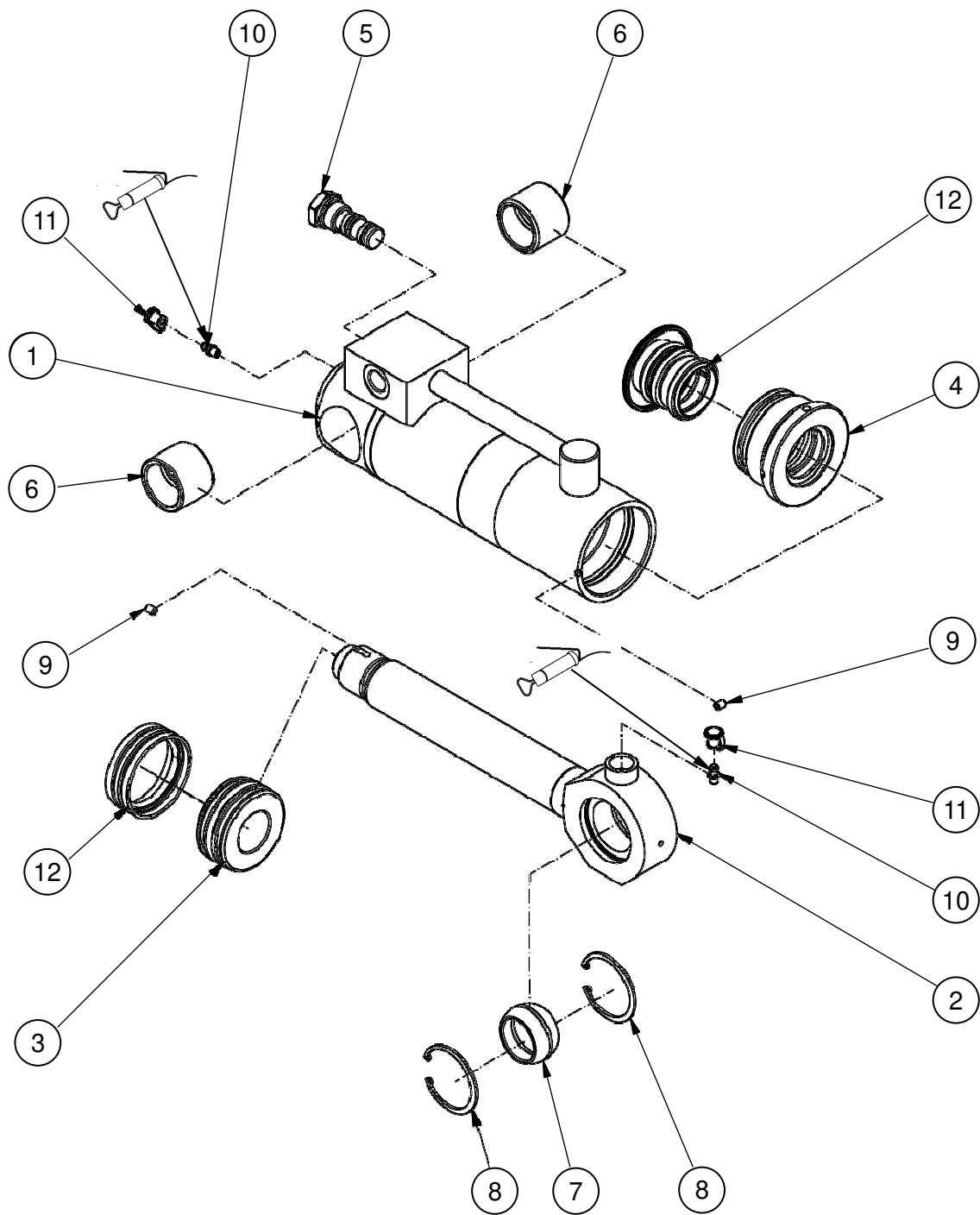
FRAME AND ROTATOR ASSEMBLY



FRAME AND ROTATOR ASSEMBLY

ITEM	PART NO.	PART NAME	Q'TY	REMARKS
1	3007000034	ROTATOR ASSEMBLY	1	
2	2002033001	FRAME	1	
3	5001001234	SCREW - ROTATOR/FRAME	4	TORQUE 279 Nm
4	5001006002	SELF LOCKING NUT	4	
5	5001002083	DISC WASHER	4	
6	5003002101	BUSHING - SHELL PIVOT PIN	4	
7	5002001217	PLUG	4	

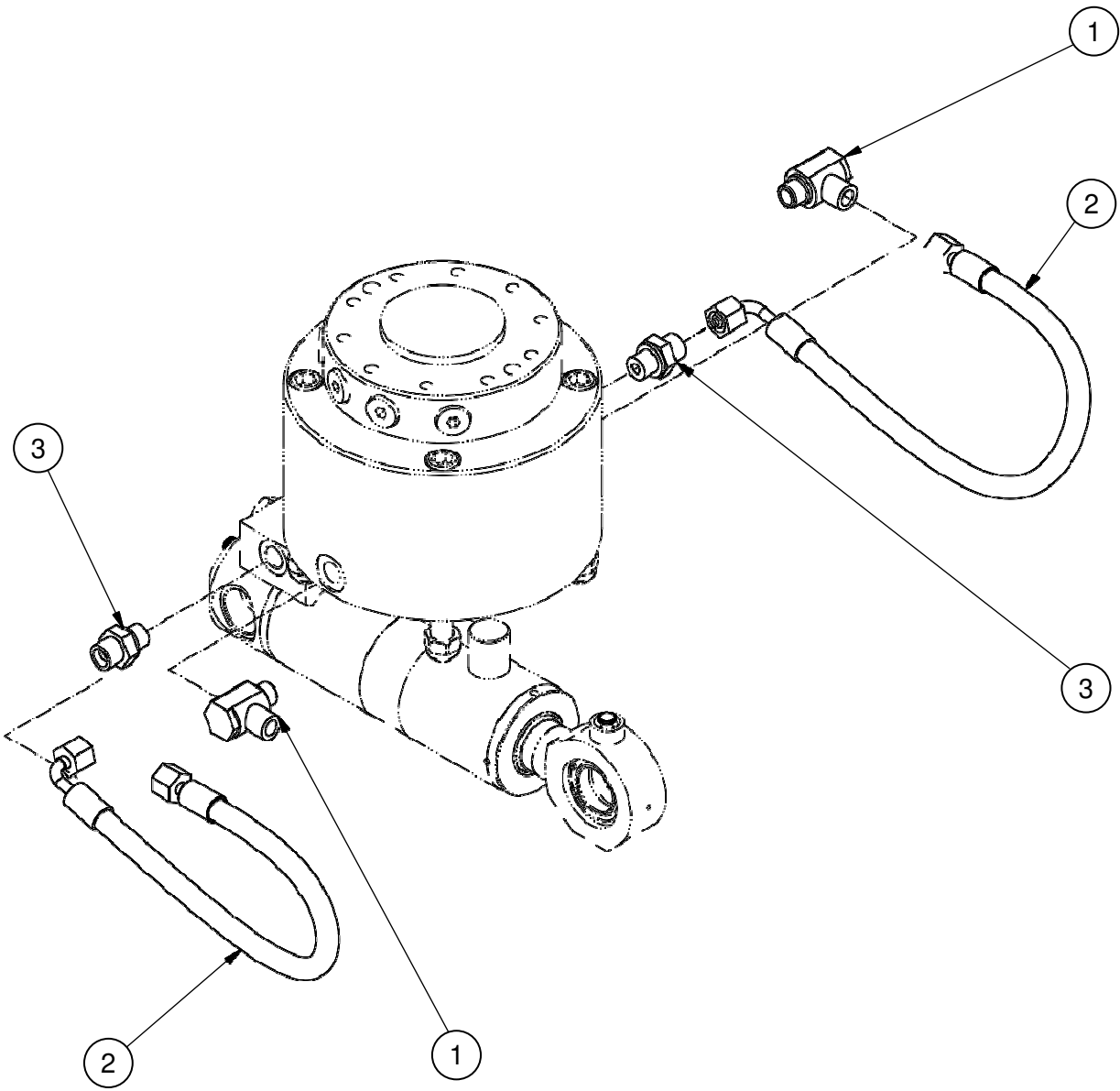
HYDRAULIC CYLINDER ASSEMBLY



HYDRAULIC CYLINDER ASSEMBLY

ITEM	PART NO.	PART NAME	Q'TY	REMARKS
	2011033100	HYDRAULIC CYLINDER ASSEMBLY	1	
1	2011033101	* CYLINDER TUBE	1	
2	2011033102	* PISTON ROD	1	
3	2011033103	* PISTON	1	
4	2011033104	* CYLINDER HEAD	1	
5	5002008031	* NON-RETURN VALVE	1	5003008016
6	5003002117	* BUSHING	2	
7	5003003002	* SPHERICAL BEARING	1	
8	5003004002	* CIRCLIP	2	
9	5001007001	* SET SCREW	2	
10	5003001002	* GREASE NIPPLE	2	
11	5003001003	* GREASE NIPPLE DUST CAP	2	
12	2011033105	* CYLINDER SEAL KIT	1	

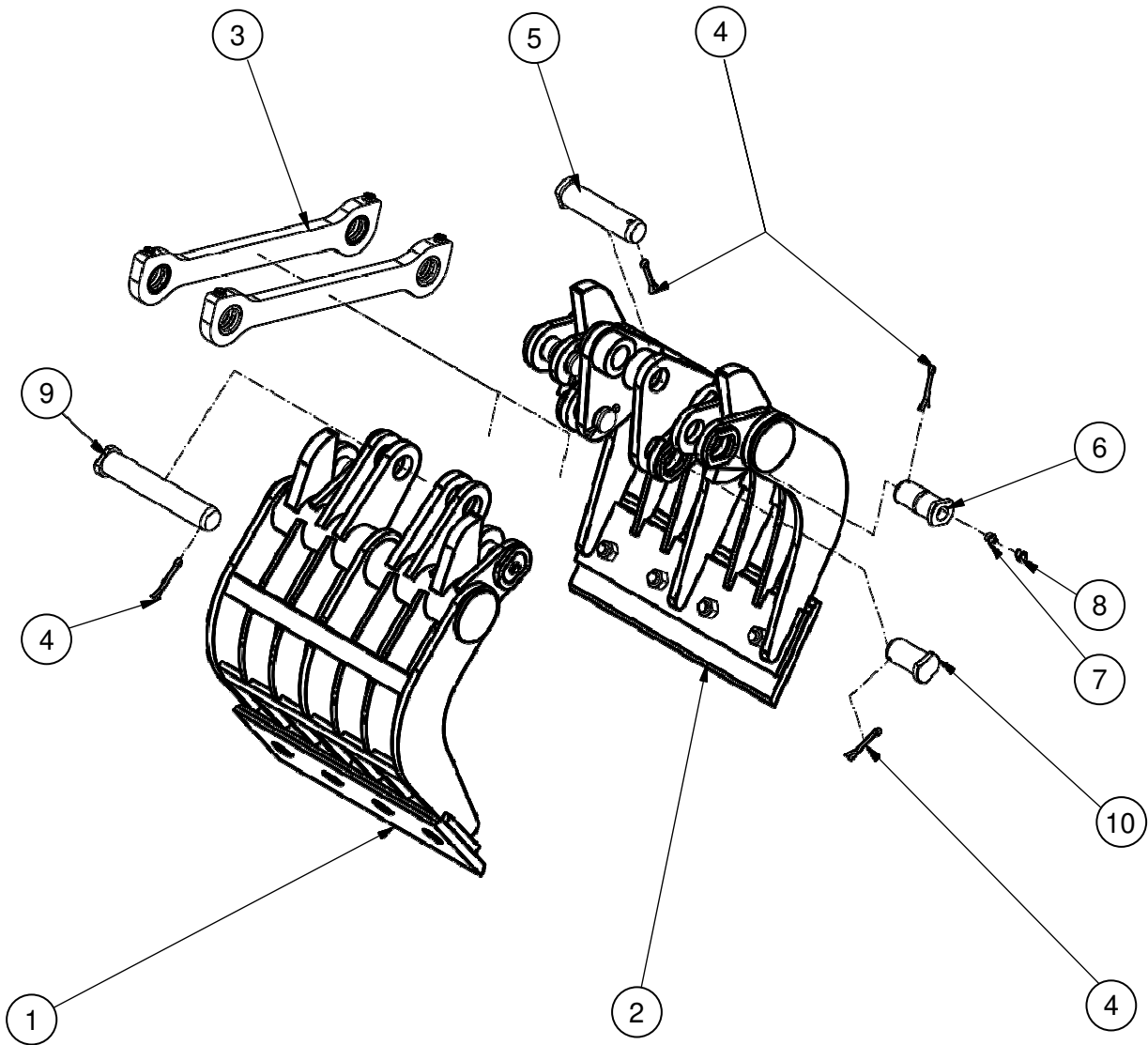
HYDRAULIC HOSES AND FITTINGS



HYDRAULIC HOSES AND FITTINGS

ITEM	PART NO.	PART NAME	Q'TY	REMARKS
1	5002001055	SWIVEL CONNECTOR	2	
2	5002010220	HOSE ASSEMBLY	2	
3	5002001015	CONNECTOR	2	
14				

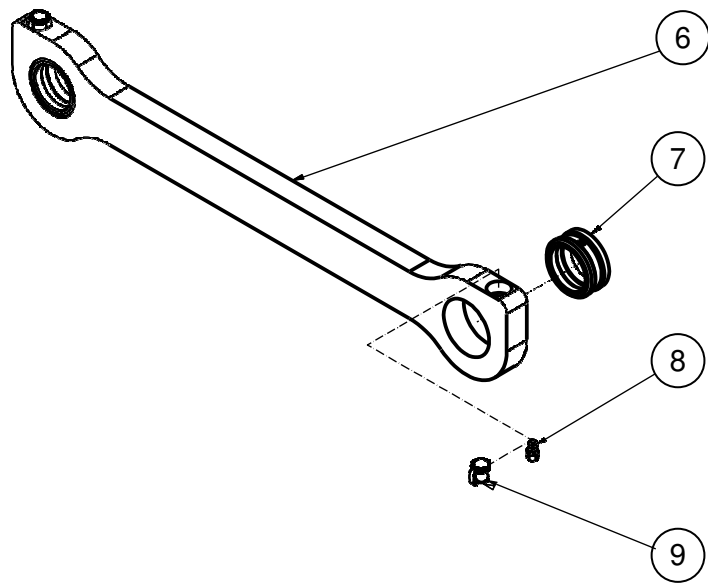
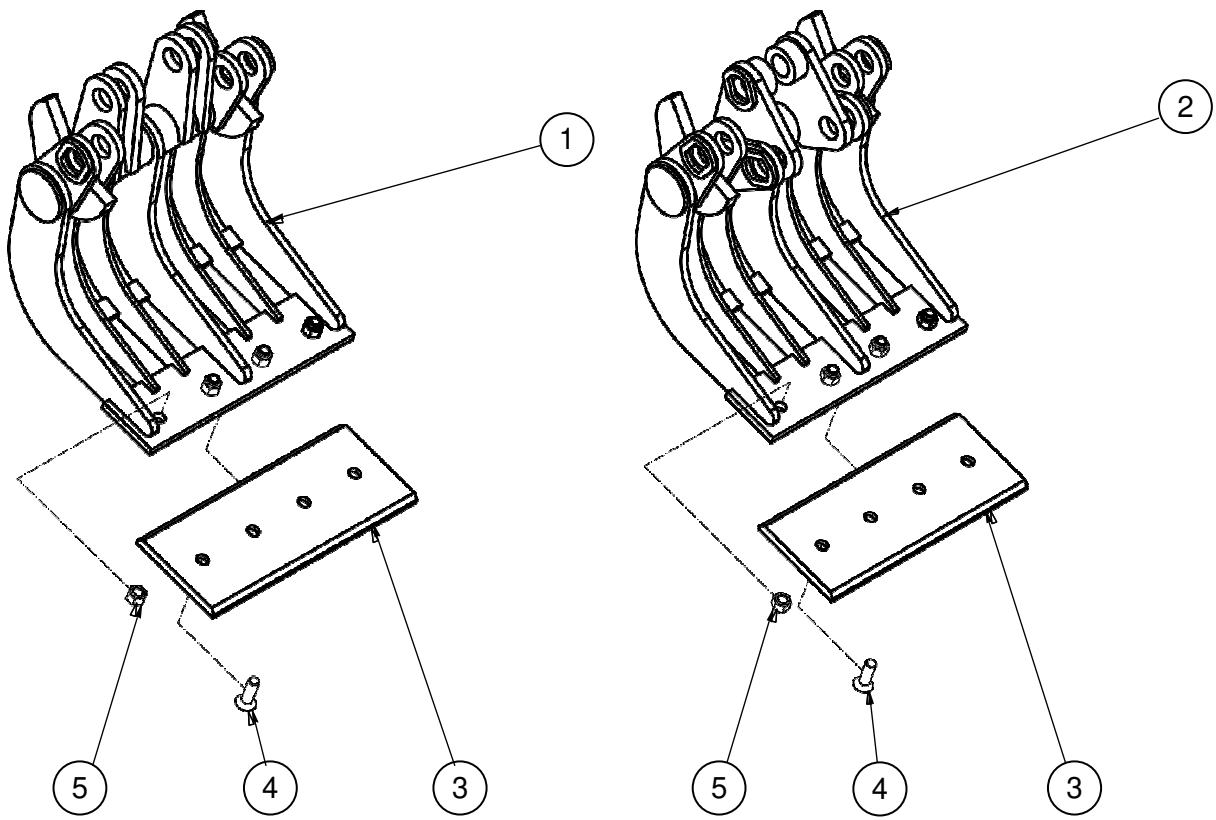
SHELL ASSEMBLY



SHELL ASSEMBLY

ITEM	PART NO.	PART NAME	Q'TY	REMARKS
1	2005027025	SHELL ASSEMBLY (LEFT)	1	SEE PAGE 07-01
2	2005027026	SHELL ASSEMBLY (RIGHT)	1	SEE PAGE 07-01
3	2004033003	SYNCHRONIZATION LINK ASSEMBLY	2	SEE PAGE 07-01
4	5001004003	SPLIT PIN	8	
5	3009035010	CYLINDER PIN	1	
6	3009035009	SHELL PIVOT PIN	4	
7	5003001001	GREASE NIPPLE	4	
8	5003001003	GREASE NIPPLE DUST CAP	4	
9	3009035011	CYLINDER/LINK PIN	1	
10	3009035012	SYNCHRONIZATION LINK PIN	2	

SHELLS AND LINK



SHELLS AND LINK

ITEM	PART NO.	PART NAME	Q'TY	REMARKS
1	2005027001	SHELL (LEFT)	1	
2	2005027002	SHELL (RIGHT)	1	
3	2005027001-08	CUTTING EDGE	2	
4	5001001216	COUNTERSUNK SCREW	8	
5	5001006006	NUT	8	
6	2004033001	SYNCHRONIZATION LINK	1	
7	5003002105	BUSHING - SYNCHRONIZATION LINK	2	
8	5003001002	GREASE NIPPLE	2	
9	5003001003	GREASE NIPPLE DUST CAP	2	



FURUKAWA ROCK DRILL EUROPE B.V.

Proostwetering 29

3543 AB Utrecht, The Netherlands

Tel.: +31-(0)30-2475160 Fax: +31-(0)30-2412305

Book No.: FDG10-K301E
Date of Issue: July 2019